

INTEGRATED WATERSHED MANAGEMENT PLANNING IN MANITOBA

Sheldon Kowalchuk
December 11, 2006

Water Planning Section Manitoba Water Stewardship

PRESENTATION OUTLINE

- ◆ Integrated Watershed Management Plans (4 slides)
- ◆ Planning Approach (7 slides)
- ◆ Planning Process (5)
- ◆ Process Implementation (4)

Manitoba Water Stewardship

The *Water Protection Act*

Water Protection

Watershed Management Planning

- ◆ Water Quality Standards, Objectives and Guidelines
- ◆ Water Quality Management Zones
- ◆ Invasive species
- ◆ Conservation and management of water in times of drought
- ◆ Riparian protection
- ◆ Integrated Watershed Management Plans
- ◆ Manitoba Water Council
- ◆ Water Stewardship Fund

Manitoba Water Stewardship

The *WPA* and The *Planning Act*

Under the *Water Protection Act*:

- Integrated Watershed Management Plans (IWMP):
 - ◆ must consider the relevant Provincial Land Use Policies, Development Plans and Zoning By-laws
 - ◆ must specify linkages between water management and land use planning so as to facilitate the adoption, in a development plan, of some or all of the provisions of the IWMP
 - ◆ must include consultation between the Water Planning Authority and the Planning District and its Board

Manitoba Water Stewardship

The *WPA* and The *Planning Act*

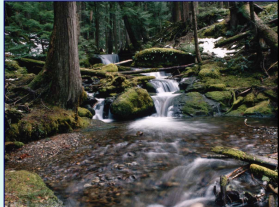
Under the *Planning Act*, Section 62.1 specifies the consideration of the *Water Protection Act* in preparing a development plan:

- When preparing a development plan, [...], a board or council must consider the application of the following insofar as they relate to land within the planning district or the municipality:
 - a) Any regulation made under Section 4 of the *WPA* governing, regulating or prohibiting any use, activity or thing in a water quality management zone designated under that act;
 - b) Any watershed management plan approved under *WPA*

Manitoba Water Stewardship

Integrated Watershed Management Planning (IWMP)

- A planning process to facilitate a better understanding of the impacts of human activity on the watershed and to outline a framework to make decisions with regard to water and land use within the watershed.



Manitoba Water Stewardship

PLANNING APPROACH

PROVINCIAL GOALS

3 Phases:

1. Municipal MB – 1st 8 years
Establish “north” process
2. Developed north
3. Undeveloped north

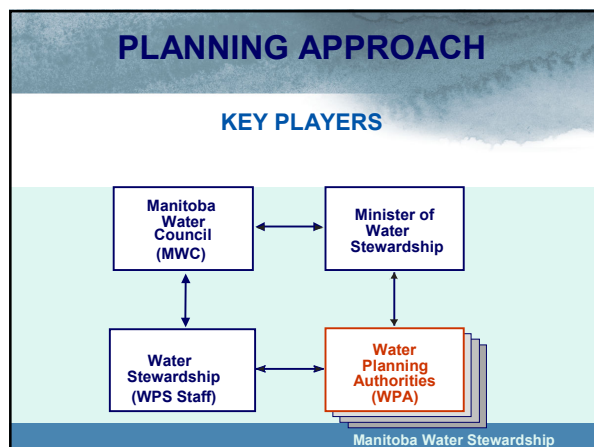
Manitoba Water Stewardship

PLANNING APPROACH

CONSIDERATIONS

- ◆ Process stakeholder - led
- ◆ Start with interested groups – success
- ◆ Increased cooperation PDs and CDs
- ◆ Science based plans

Manitoba Water Stewardship



Inextricable Linkages

Taking Care of Our Watershed
East Souris River Watershed
A Watershed Plan for the East Souris Watershed
November, 2006

Watershed Health

Economic Health Public Health

"A watershed can be considered healthy when its inherent potential is realized, its condition is stable, its capacity for self repair is preserved, and minimal external support for management is needed."

Manitoba Water Stewardship

PLANNING APPROACH

WPA ATTRIBUTES

- ◆ Represent watershed area
- ◆ Minimum size 2000 sq. km's.
- ◆ Incorporated - administration & implementation capability
- ◆ Competencies to engage all stakeholders
- ◆ Have land and water interests

Manitoba Water Stewardship

The World Has Three Kinds of Organizations.....

1. Those that get short term results but don't have a clue where they are going in the future.....
2. Those that have a great ten year plan but go out of business in ten months.....
3. Those that can get short term results in conjunction with a vision for the future.....these are the great ones but are very rare and in short supply

Manitoba Water Stewardship

PLANNING APPROACH

WPA PLANNING SUPPORT

- ◆ Planning Coordination MWS - WPS
- ◆ Resource specialists – various departments
- ◆ Planning services (MRSC, CGS)
- ◆ Consultants
- ◆ Partners

Manitoba Water Stewardship

PLANNING APPROACH

WPA FINANCIAL SUPPORT

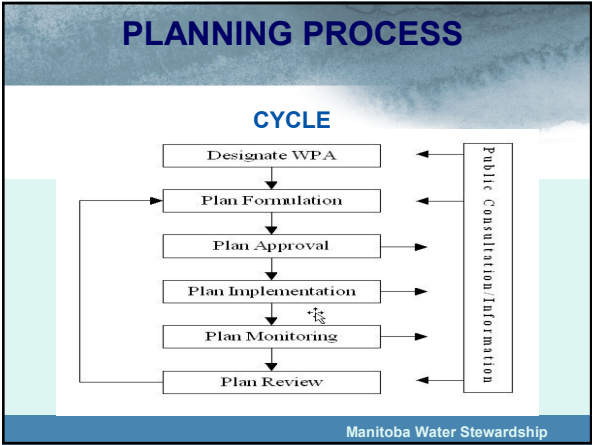
PROVINCIAL

- ◆ Start-up grant (\$25K)
- ◆ CD cost-sharing (75/25)
- ◆ Water Stewardship Fund

OTHER

- ◆ Partners

Manitoba Water Stewardship



PLANNING PROCESS

ESTABLISHING PRIORITIES

Balance/flexibility

- ◆ State of Watershed Report
- ◆ Surface Water Management
- ◆ Source Water Protection
- ◆ Riparian Management
- ◆ Water Quality
- ◆ Etc.

Manitoba Water Stewardship

PLANNING PROCESS

PRE-PLANNING 5-STEPS

- ◆ Initial discussions - potential WPA Agency & MWS
- ◆ Agency resolution to seek WPA status
- ◆ MoU - Agency & MWS
- ◆ ToR - WPA & MWS
- ◆ MWS provides grant to WPA

Manitoba Water Stewardship

PLANNING PROCESS

PLANNING 10- STEPS

- ◆ Form Project Management Team
- ◆ Form WPAT
- ◆ Compile and Distribute SoW report
- ◆ Consult Stakeholders 1st (Winter)
- ◆ Compile Draft IWMP including Source Water Protection Plan

Manitoba Water Stewardship

PLANNING PROCESS

PLANNING 10- STEPS (Cont.)

- ◆ Consult Stakeholders 2nd (Winter)
- ◆ Finalize IWMP (April – two years)
- ◆ Implement IWMP
- ◆ Monitor IWMP
- ◆ Evaluate & Redo IWMP (10 years)

Manitoba Water Stewardship

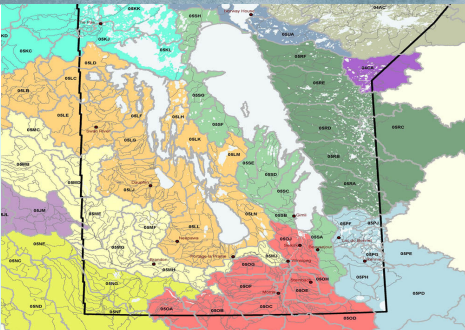
PROCESS IMPLEMENTATION

TIMELINE

- ◆ Start March 2006
- ◆ Progress rate - initiate 5 plans/year
- ◆ Plan duration - 2 years/plan
- ◆ Complete Municipal-MB (35) by 2015

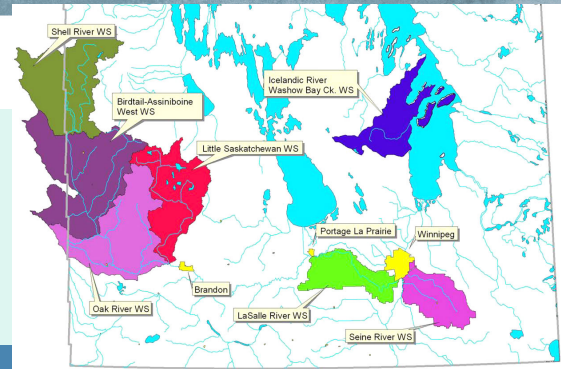
Manitoba Water Stewardship

WATERSHEDS OF MANITOBA



Manitoba Water Stewardship

PROCESS IMPLEMENTATION CURRENT STATUS



“Vision without action is merely a dream.

Action without vision just passes the time.

Vision with action can change the world.”

- Joel Barker

Manitoba Water Stewardship