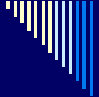





## Sandy Lake Study and Action Plan for Water Quality Improvement

2005




### Objective 1

- Reduce and control the amount of nutrient being put into the lake.
  - Step 1 – Manage sewage waste
    - Task – Sewage management plan
    - Task – Removal or refurbishment of outhouses
    - Task – Eventually hook all dwellings to sewer and water



### Objective 1 continued

- Step 2 – Manage runoff
  - Task – Maintain riparian area
  - Task – Review municipal roads
  - Task – Remove cattle from the lake
  - Task – Investigate overland drainage at east side and golf course



### Objective 1 continued

- Step 3 – Manage inputs
  - Task – Chemical use
  - Task – Discuss options for golf course management
  - Task – Eliminate washing in the lake
  - Task – Control fueling of boats



## Objective 2

- Manage the existing use of the lake
  - Step 1 – Control further development
    - Task – Moratorium on cottage development
    - Task – Reduce access points to the lake
  - Step 2 – Reduce and control lake disturbances
    - Task – Implement no wake zones
    - Task – Adopt standards for in-water works



## Objective 3

- Restore the lake
  - Step 1 – Restore the riparian area
    - Task – Develop and implement a cottage owner code of conduct
  - Step 2 – Other restoration techniques
    - Dredging
    - Water draw-offs/inputs
    - Aeration



## Results

- To extend water and sewer too costly
- Mail-out to landowners to reduce/eliminate chemical & fertilizer use
- Concurrent investigation by Manitoba Conservation on sewage disposal by seasonal residences



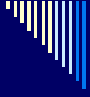
## Little Saskatchewan River Watershed Analysis

December 1998



## Projects


1	Trees blocking mouth of river/siltation	low
2	Riparian fencing	medium
3	Riparian fencing	low
4	Blockage/erosion/riparian restoration	low
5	Riparian Fencing, off river watering	medium
6	Riparian Fencing, off river watering	medium
7	Riparian area fencing, rotational grazing	medium-high
8	Riparian area fencing	medium
9	Spawning ground rehabilitation	high
10	Riparian fencing	high



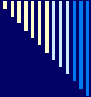
11	Riparian fencing	high
12	Riffles, riparian fencing	ongoing
13	Rapid City lagoon	Environment
14	Rivers lagoon	Environment
15	Riparian fencing	low/medium
16	Riparian fencing	high
17	Riparian fencing	medium
18	Riparian fencing, offsite watering	high
19	Riparian fencing, off river watering, erosion	high
20	Riparian fencing, rotational grazing	medium/high

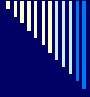


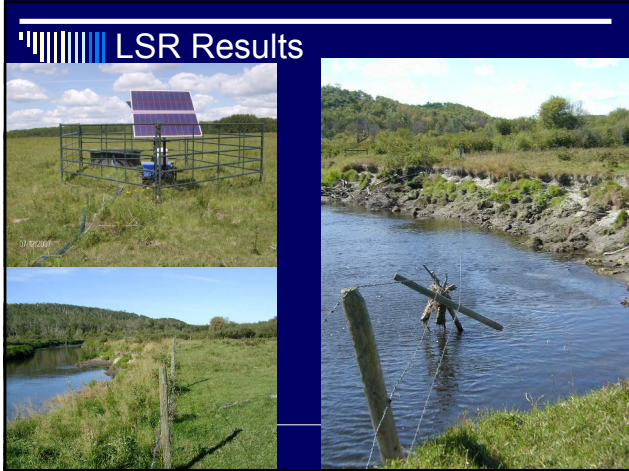
21	Riparian fencing, off river watering	medium/high
22	Riparian fencing, erosion	medium
23	Minnedosa lagoon	Environment
24	Fish blockage/feasibility	high
25	Bank slumping/erosion	ongoing
26	Riparian fencing	medium
27	Riparian fencing	low
28	Riffle work, construction	ongoing
29	Riparian fencing, off river watering	medium
30	Riffle work	ongoing



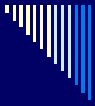
31	Riparian fencing, off river watering	medium
32	Riparian fencing, off river watering	medium
33	Riparian fencing, ford blockage, erosion	medium
34	Riparian fencing, off river watering, erosion	extreme
35	Riparian fencing, off river watering	high
36	Riparian fencing, off river watering	high
37	Water crossing access point	medium
38	Road approach erosion	high
39	Riffle construction required	high
40	Riparian fencing	medium

		
<input type="checkbox"/> 41	Road approach erosion	medium
<input type="checkbox"/> 42	Road approach erosion	medium
<input type="checkbox"/> 43	Riparian fencing	medium
<input type="checkbox"/> 44	Riparian fencing	low/medium
<input type="checkbox"/> 45	Road approach erosion	medium
<input type="checkbox"/> 46	Riparian fencing, water access crossing	medium
<input type="checkbox"/> 47	Riparian fencing, off river watering	medium
<input type="checkbox"/> 48	Riparian fencing	low
<input type="checkbox"/> 49	Bank clean up/abandoned vehicles	low
<input type="checkbox"/> 50	Riparian area fencing	low/medium

 <b>Other Projects - Studies</b>		
<input type="checkbox"/>	Fish Movement from Wahtopanah to Minnedosa in progress	high
<input type="checkbox"/>	Water Chemistry on Little Saskatchewan in progress	Environment
<input type="checkbox"/>	Life cycle for Reservoirs on Little Saskatchewan River as part of Plan	high
	*Presented at stakeholder meeting, June 1998	
<input type="checkbox"/>	Recreational Angling Survey	low



 <b>Other Projects Education and Workshops</b>	
<input type="checkbox"/>	Protection and Restoration of Riparian Areas
<input type="checkbox"/>	Alternatives to Instream Access by Cattle
<input type="checkbox"/>	Construction of River Fords to Prevent Erosion and Blockage



## Final Thoughts

- ❑ Projects completed, but not necessarily being used or in good repair
- ❑ Low priority vs. high priority
- ❑ Financial assistance
- ❑ Follow-up